

## Service: MapGuide-kickstart



*Do you have Autodesk MapGuide technology but you are not using it?*

*Do you need to upgrade your technology but are concerned about the implementation?*



If your answer is **YES**, then give your technology a *MapGuide-kickstart* with AIT Spatial Ltd and take advantage of the flexibility and cost effectiveness of sharing your data within a geographical environment.

Under the *MapGuide-kickstart* programme, AIT Spatial will ensure you get maximum benefit from your Autodesk MapGuide technology at a pace to suit your needs. This programme tailored to your business, assists you in the identification of specific requirements via a Test Project and instructs you, through the data collating and publishing stages, to make your Test Project your Live Project and in turn your Live web-enabled GIS solution.

**Identify** – Discuss your business acumen and plan a Test Project as a starting point for your overall solution. Understand the flexibility of the software and how other areas of your business can be added for future development, if required. Consider all possibilities from Drawing Archive Management and Retrieval to Incident Recording and Asset Management.

**Collate** the identified datasets required including Ordnance Survey data and user datasets. Utilise a wide variety of formats including AutoCAD DWG, ESRI SHP, ARC SDE, MapInfo TAB or MIF/MID), Oracle, SQL Server to name but a few.

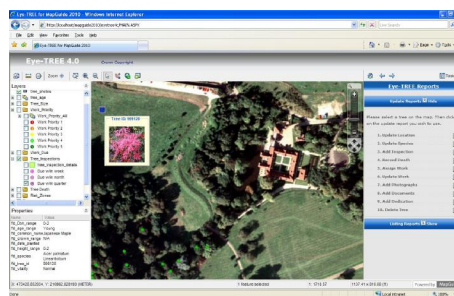
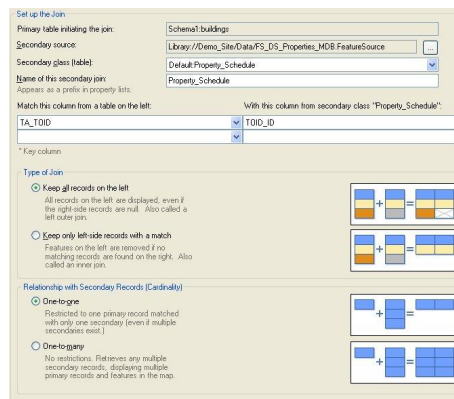
**Publish** the data using Autodesk MapGuide Studio. Full training is provided including various styles, tips and tricks plus image based tool tips, and ordered property lists.

**Interrogate** – learn and explore the three levels of data interrogation with the MapGuide environment:

- Tooltips
- Properties
- Reports

**Updating made simple** - reports provide a powerful mechanism for not only interrogating the data but also for updating information. Whether you upload photographs and documents, or update information to a back-end database creating a more efficient flow of information. The updated data is then immediately available to all users.

**Sharing Data** - the ethos behind Autodesk MapGuide is to share data with a wide and often diverse audience, simply and efficiently. Through a normal web browser your Colleagues, Clients and Contractors can have password access to data, enabling your business to make better informed decisions - faster.



*Let us help you realise the power of your data  
 and the ease of wide spread communication.*

*MapGuide-kickstart* is available for Autodesk MapGuide Enterprise and Autodesk MapGuide OpenSource and includes sample application codes and reports.