

Eye-TREE What's New in Version 4.0 & 4.1

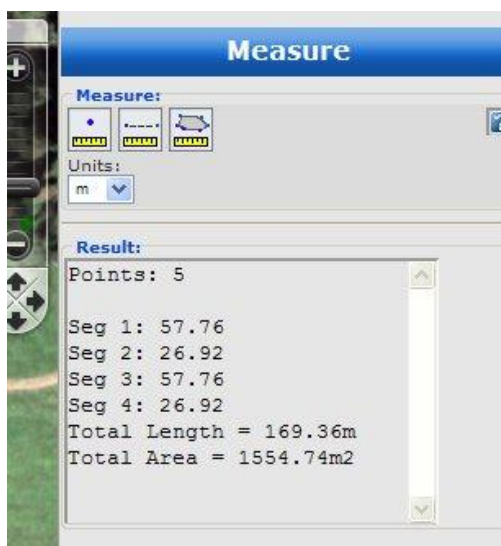
Eye-TREE v4 is the first release of Eye-TREE for the Autodesk MapGuide Open Source and Autodesk MapGuide Enterprise platforms. Fully compatible with the new 2010 and links to Eye-SPACE software for Estate Management.

In addition to the new mapping technology, Eye-TREE v4 is the most efficient and streamlined release to date. Where possible Eye-TREE 4 uses a wizard approach for many of the tasks required for tree stock management. AIT Spatial is constantly reviewing and enhancing its software and now includes additional features in version 4.1.

New to Version 4.1

1 – Enhanced Distance and Area Measuring Tools

AIT Spatial has replaced the default measuring tool within the underlying Autodesk MapGuide technology with its own measuring routine, presenting the user a segmentation breakdown for linear and area calculations as well as a choice of units. The User can “Copy and Paste” the measurement values to other applications.



2 - Report Hyperlinks

Eye-TREE Reports now contain hyperlinks to other related reports thereby providing a more flexible and richer user experience when accessing information

For example, the user chooses to run a summary report of a selected group of trees, by clicking the reports hyperlink function, the user can then choose for example to view the work history or work assigned to a particular tree. Previously, the user would have needed to run the report again from the Eye-TREE Reports menu.

3. Enhanced Selection and Query Facilities

The ‘Show me Where’ feature has been extended to any data field within the Eye-TREE database – such as ‘show me all the trees with attached resistogram images’.

Eye-TREE

What's New in Version 4.0 & 4.1 ...continued 2

New in Version 4.0

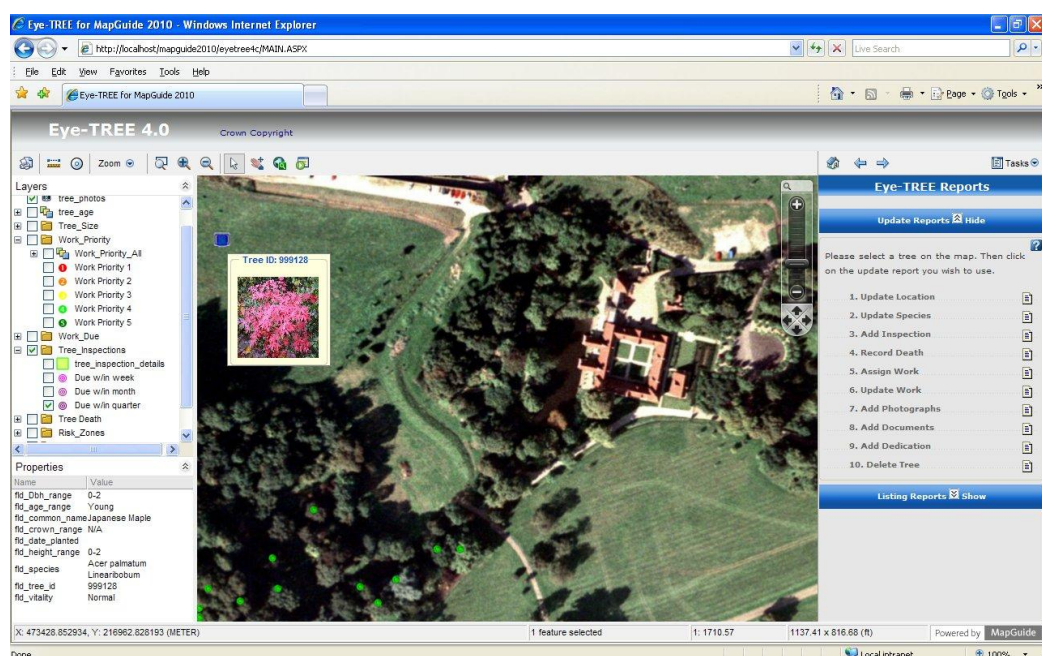
1 - Wizards

Record a new Tree

Using the Add Tree Wizard the user is led through each step by a simple wizard process

1. Indicate tree position on the map
2. Select the species of tree from the comprehensive list of botanical names
3. Record the tree size and vitality from simple pick list values
4. Record any additional details including an optional textual description
5. Save the information to the database.

The information is saved to the database, the tree is displayed on the Map using appropriate symbology for tree type, size, age, height, etc.



Once the initial data is in the system, the Wizards allow the user to *Add or Source Reports* on the following information:

- Ø Inspection Records
- Ø Work Task Assignments
- Ø Records for Ceremonial/Dedications
- Ø Photographs (including Thermal Infra-red Red imagery indicating stress)
- Ø Documents such as Microsoft Word and Excel files as well as PDF, scanned images and digital video and sound files.

2 – System Specifications

Eye-TREE v4 Specification installed on site:

Minimum Platform and System Requirements

- Ø Microsoft Windows® Server 2003 R2 (SP2) or Microsoft Windows® Server 2008, Linux: Red Hat® Enterprise ES Version 5
- Ø Intel® Pentium®-based PC with 1GB RAM,
- Ø 1 GHz processor
- Ø 350 MB available disk space
- Ø Microsoft Internet Information Services (IIS)7, Microsoft IIS 6.x, Microsoft IIS 5.x, or Apache HTTP Server 2.x

Eye-TREE v4 application – Hosted Requirements

- Ø Most common web browsers are supported e.g. Internet Explorer, Firefox etc
- Ø Broadband Internet connection.

Eye-TREE

What's New in Version 4.0 & 4.1...continued 3

3 - Interrogation and Reporting

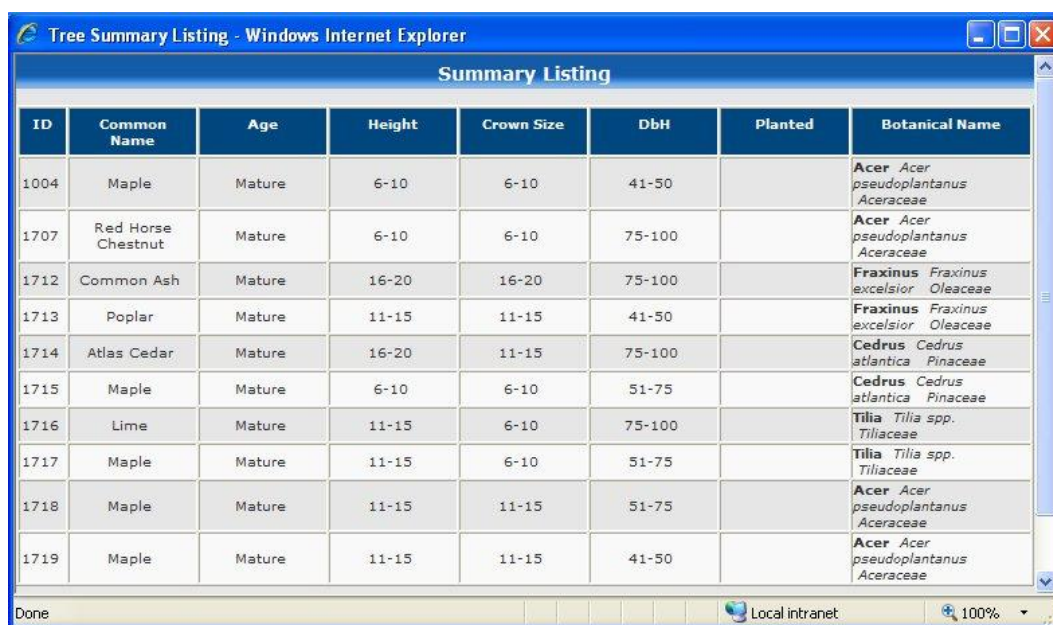
All the information stored within Eye-TREE can be accessed in several ways:

- Ø **Tooltips** - the perfect mechanism for displaying the most pertinent information about the tree for that layer. For example, the tree photos layer embeds the main photo in the tooltip, whereas the Work priority layer details the work task, the date due, the priority of the task and who the task has been assigned to. The tooltip is displayed by simply holding the mouse pointer over the map object – such as a tree.
- Ø **Properties** - enables additional information to be displayed about the selected tree or other objects on the map. Typically the properties panel is used to display a largest subset of information about the tree or other map object.
- Ø **Reports** - enable a wide variety of information to be displayed. A number of reports extract data from various sources and enable further interaction with the system. For example, the attached documents report displays all the files associated with the selected trees. By then clicking on the icon associated with each attachment the user can view the scanned image or open the PDF file or view the Excel spreadsheet and so on.

4 - Pre-Formatted Reports

Eye-TREE 4 also provides a number of pre-formatted reports to recall information from the system. These include:

- Ø Summary Information
- Ø Tree Inspection details
- Ø All Work carried out on the tree/trees
- Ø List of attached Documents
- Ø List of attached Photographs



ID	Common Name	Age	Height	Crown Size	DbH	Planted	Botanical Name
1004	Maple	Mature	6-10	6-10	41-50		Acer Acer pseudoplatanus Aceraceae
1707	Red Horse Chestnut	Mature	6-10	6-10	75-100		Acer Acer pseudoplatanus Aceraceae
1712	Common Ash	Mature	16-20	16-20	75-100		Fraxinus Fraxinus excelsior Oleaceae
1713	Poplar	Mature	11-15	11-15	41-50		Fraxinus Fraxinus excelsior Oleaceae
1714	Atlas Cedar	Mature	16-20	11-15	75-100		Cedrus Cedrus atlantica Pinaceae
1715	Maple	Mature	6-10	6-10	51-75		Cedrus Cedrus atlantica Pinaceae
1716	Lime	Mature	11-15	6-10	75-100		Tilia Tilia spp. Tiliaceae
1717	Maple	Mature	11-15	6-10	51-75		Tilia Tilia spp. Tiliaceae
1718	Maple	Mature	11-15	11-15	51-75		Acer Acer pseudoplatanus Aceraceae
1719	Maple	Mature	11-15	11-15	41-50		Acer Acer pseudoplatanus Aceraceae

Eye-TREE

What's New in Version 4.0 & 4.1... continued 4

5 - Show me where?

One of the many advantages of using a map based approach is the "Show me where" scenario:

For example,

- Ø Show me all those trees which are to be inspected within the next week
- Ø Show me all the trees where a work task is overdue

By being able to visualise the trees on the map, the user can then prioritise and manage resources in a more efficient way. By visualising work task due within 1 week and within 1 month, certain tasks could be grouped together to make most efficient use of specialised equipment or use of chemicals. This in turn could be linked to your COSHH inventory.

6 - Flexibility

Following the initial set-up, the usability of this software will show an instant return on your investment. This is based on the amount of time saved, access to full extensive records, availability of information instantly and also the opportunity for multi-user access.

In addition to these time saving features, this software can be developed/used further within your business. Publishing your data, whether tree related or other, can be an ideal way of ensure all parties working on a project have up to date information.

Consider publishing some of the interesting aspects of your data via your website, make information available by extranet or Internet, using Password Protection, to your colleagues or associated businesses.

The core technology of Version 4 is ideal for uses such as:

- Ø Fire Maintenance
- Ø Insurance Records
- Ø Maintenance and Repair Records
- Ø Restoration Records
- Ø Asset Management
- Ø Transport
- Ø Plus many more

Ask us for more details on this.